

COMMUNITY HEALTH BOARD

2008

*Carlton-Cook-Lake-St. Louis
Community Health Board
Program Summary*

CHB 2008 Annual Meeting

- Joint Powers Agreement Requirement:
 - Action Summary
 - Board resolutions contained within CHB Meeting Minutes
 - Program Summary Review
 - Program Name
 - Program Description
 - Financial allocation to Counties

Community Health Program Funding

- **2008 Anticipated Funding: \$3,511,743.00.**
- **Direct County Allocation: \$3,310,512.00**
- Funding levels may change as additional special grants/programs become available

2008 CHB LOCAL PUBLIC HEALTH ACT FUNDING

- **Funding sources**
 - State General Funds
 - Federal Maternal and Child Health (MCH) Funds
 - Federal Temporary Assistance to Needy Families (TANF) Funds.



State General Funds

- 2008 County State General Funding

- Carlton County - \$137,097.00

- Cook County - \$23,178.00

- Lake County - \$50,836.00

- St. Louis County - \$808,516.00

Total: \$1,019,627.00

Updated: 2/25/08 Same amounts since 2004

LOCAL PUBLIC HEALTH GRANT 2008

Expectations:

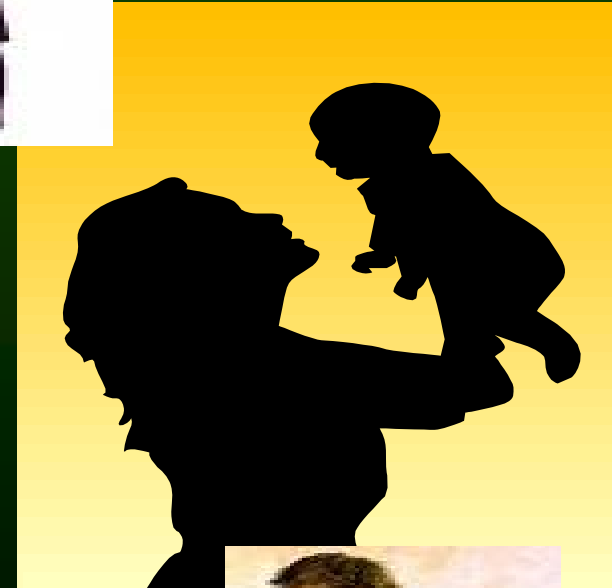
- **Provide the Essential Local Activities in the 6 Areas of Public Health Responsibility**
- **Complete CHAAP Process**
- **Local Match Requirements:**
 - 75% match for all State General funds



MATERNAL & CHILD HEALTH (MCH) PROGRAM

- Priorities:

- Pregnancy
- Family Planning
- Handicapped/Chronically Ill Children
- Infant Health
- Child/ Adolescent Health.



2008 Maternal and Child Health Funding

- County MCH Funding:

- Carlton County - \$ 37,852.00

- Cook County - \$ 4,713.00

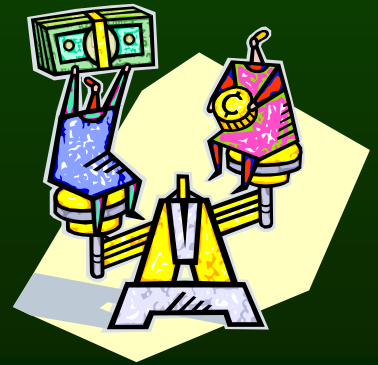
- Lake County - \$ 10,055.00

- St. Louis County - \$ 247,550.00

Total: \$300,170.00

2008 Maternal and Child Health Funding

- Funded by a need-based formula
- Number of childbearing aged women, income, other numerous factors
- *Match of 50% required*



2008 TANF Federal Home Visiting Program

- *Purpose:*

(TANF: Temporary Assistance to Needy Families)

- Expand and enhance public health nursing visits
- Reduce teen pregnancies, especially among teen parents
- Increase financial independence of teen parents

Outcomes: Ready by Birth, Ready by school
Decrease abuse and neglect, etc.



Additional TANF Funds 7/2008

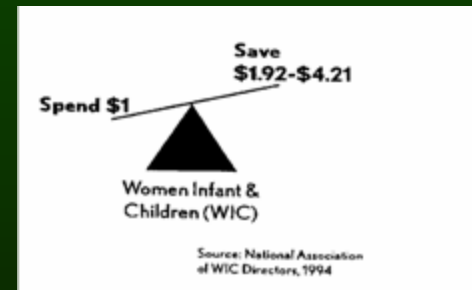
- Appropriated by Legislature
- Expand Home Visiting Programs
- Requires at least 1 PHN Assessment visit – prenatally if possible
- Plan submitted to MDH by March 7, 2008

2008
TANF HOME VISITING FUNDING

Carlton County -	\$ 34,978.00
Cook County -	\$ 3,244.00
Lake County -	\$ 7,739.00
St. Louis County -	<u>\$ 343,566.00</u>
Total:	\$ 389,527.00

WOMEN, INFANTS & CHILDREN (WIC) PROGRAM

- **Counties Operate Their Individual WIC Programs**
 - Education
 - Nutritional Supplemental Food
 - Basic Health Monitoring



2008 (Estimated) WIC Administration Funding

- Funding levels fluctuate.
- Currently \$11 per participant
- Federal Fiscal Year 2008 Estimates:

– Carlton County	\$ 124,212.00
– Cook County	\$ 16,236.00
– Lake County	\$ 39,204.00
– St. Louis County	<u>\$ 566,412.00</u>
TOTAL	\$ 746,064.00

Value of WIC Vouchers Issued Federal Fiscal Year 2007

• Carlton	\$ 649,351
• Cook	\$ 83,000
• Lake	\$ 136,329
• <u>St. Louis</u>	<u>\$ 2,655,331</u>
Total:	\$ 3,524,011



PUBLIC HEALTH PREPAREDNESS

- Purpose:

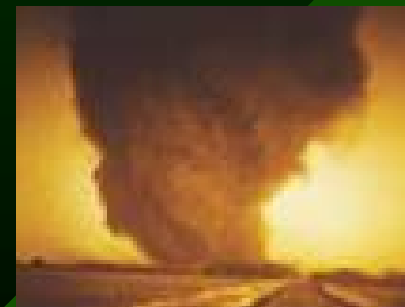
- Enhance capacity to respond to a variety of threats:

- Bio-terrorism, Infectious diseases
 - Natural disasters, etc.



- Duties:

- Tabletop Exercises/ Drills (stockpile, mass dispensing)
 - Develop relationships/agreements
 - Improve communications (HAN) Develop local Volunteer Registry and train



Public Health Preparedness Funding

**County Public Health Preparedness funding
8/31/07-8/09/08 (49 mo award): from MDH**

Carlton County - \$ 29,065.00

Cook County - \$ 15,993.00

Lake County - \$ 15,993.00

St. Louis County - \$170,731.00

Total: \$231,782.00



Public Health Preparedness Pan Flu

Funding 8/31/07 – 8/09/08 (49 week award - MDH)

• Carlton County	\$15,621.00
• Cook County	\$7,342.00
• Lake County	\$9,063.00
• St. Louis County	<u>\$63,575.00</u>
TOTAL	\$95,601.00



Pan Flu Responsibilities

- Public health emergency advisory committees
- Develop comprehensive plans
- Disease-reporting protocols
- Communication
 - 24/7 Alerting Tests - HAN
- Workforce Readiness
 - Personal Protective Equipment (PPE) - Fit Testing
 - Training



CHILD & TEEN CHECK-UPS (C&TC)

- **Health screening for all children ages 0-19 on Medical Assistance/Minnesota Care.**
- **C&TC Administrative Outreach Grant Objectives include:**
 - **Informing**
 - **Assisting**
 - **Coordination**



Outcomes for C&TC Outreach

- Examples:
 - Increase number of children who receive CTC screening
 - Increase efforts to market to foster care providers
 - Target outreach to providers
 - NE Partnership Project



2008 C&TC Administration Outreach Funding

- Federal funding through DHS
- Based on number of children on MA/Minnesota Care x \$25.00/child

County C&TC Funding Levels

Carlton County	\$59,550.00	(2,382 children)
Cook County	\$7,300.00	(292 children)
Lake County	\$21,925.00	(877 children)
St. Louis	<u>\$401,950.00</u>	<u>(16,078 children)</u>
Total	\$490,725.00	(19,629 children)

PERINATAL HEPATITIS B FOLLOW-UP

- **Critical monitoring and follow up** of women with Hepatitis B who are pregnant or who have delivered within the previous 12 months
- **Fee for Service Reimbursement:** \$400.00 per infant followed



IMMUNIZATION PRACTICE IMPROVEMENT (IPI)

- Counties assess immunization practices of local medical clinics
- Teaching and Follow-Up
- MDH reimburses \$ 200 - \$ 400 for different levels of assessments

***St. Louis and Cook Counties are not participating in this program - 2008*



Alcohol, Tobacco and Other Drug Use (ATOD) Prevention Center

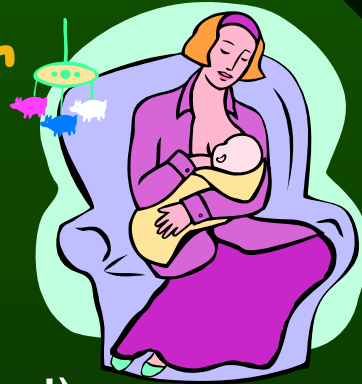
- Covers 7 counties in NE Minnesota
 - Region 2
- \$100,000 (7/1/07 – 6/30/09)
- Identifies, Supports and Links Communities together in the Prevention of Alcohol, Tobacco, and Other Drug Abuse



ATOD Prevention Center Program Highlights

- Laura Bennett, Regional Coordinator:
 - Builds Relationships in the region and state
 - Provides Technical Assistance
 - Provides Training
 - Helps communities identify and address needs
 - Knowledgeable regarding available resources, materials and trainings

WIC Breastfeeding Peer Counselor Grant



- 6 County Project (St. Louis Co not involved)
- \$51,524 – total grant
- October 1, 2007- September 30, 2008
- Peer counselors provide additional support and education to pregnant and postpartum women involved with WIC
- Specially trained PHNs oversee peer counselors in each county



Active Living by Design Project

\$\$ thru ARDC – 9/1/06-4/30/08 \$35,000

- Carlton \$ 5,000
- Cook \$ 4,500
- Lake \$ 4,500
- St. Louis \$ 8,500
- Fond du Lac \$ 4,500
- Grand Portage \$ 4,500
- CHB + ARDC \$ 3,500

(for project expenses – e.g., Marketing, brochures additional expenses, etc.)



Active Living by Design

Pilot Communities

- NE Carlton County
- Silver Bay
- Hibbing
- Grand Marais



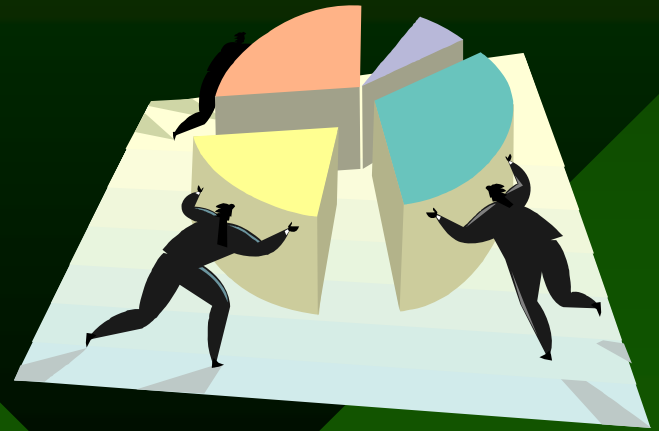
Assessment – Surveys, Key Informant Interviews

Engagement – Market “Active Living by Design” Concept

September 2006 through April 2008

Total 2008 Funding to the CHB

\$ 3,676,994



2008 COMMUNITY HEALTH BOARD MEMBERSHIP

CARLTON COUNTY

Commissioner Marv Bodie

Barb Little

COOK COUNTY

Commissioner Janice Hall

Bev Green

LAKE COUNTY

Commissioner Dr. Thomas Clifford

Brad Alm

ST. LOUIS COUNTY

Commissioner Mike Forsman

Commissioner Steve O'Neil

Commissioner Peg Sweeney

CHB MEDICAL CONSULTANT

Dr. Harold B. Leppink

CHB DIRECTOR

Julie Myhre